



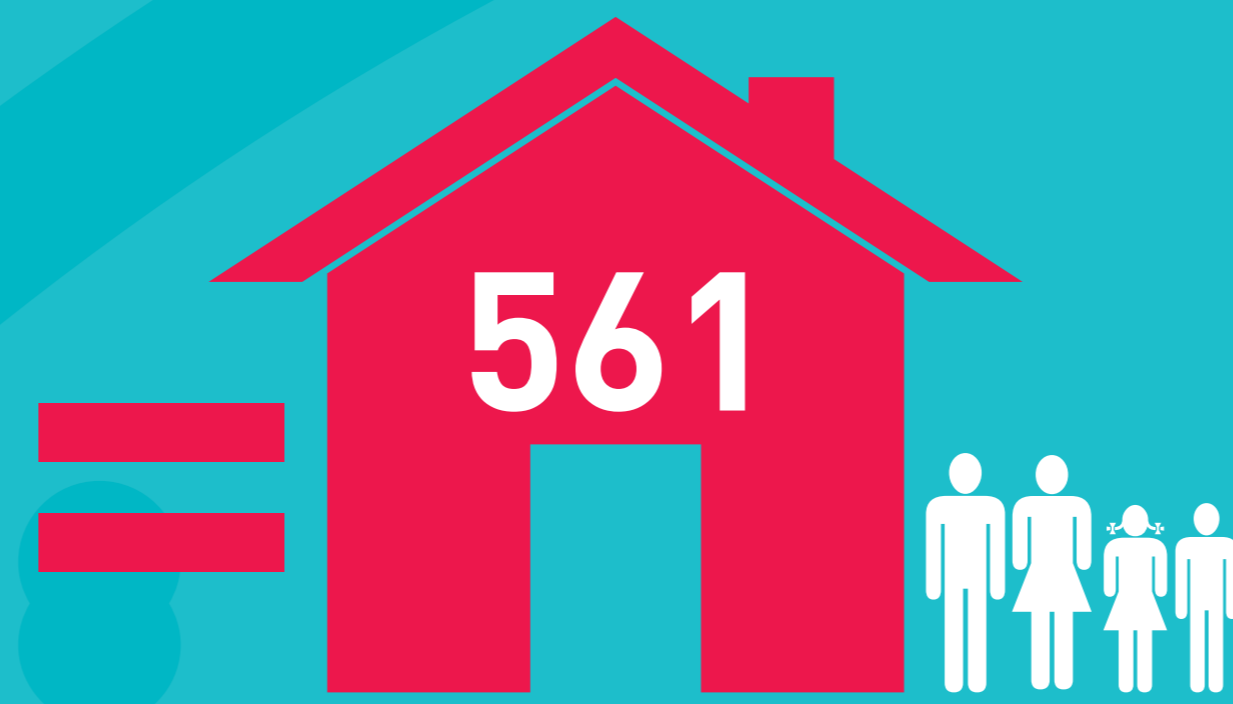
# NORTHBOROUGH 2025

Our village, our plan, our future

Did you know? Facts about Northborough



With an area of **488 hectares**, that's just over **1200 acres**, Northborough is one of the largest parishes in Peterborough



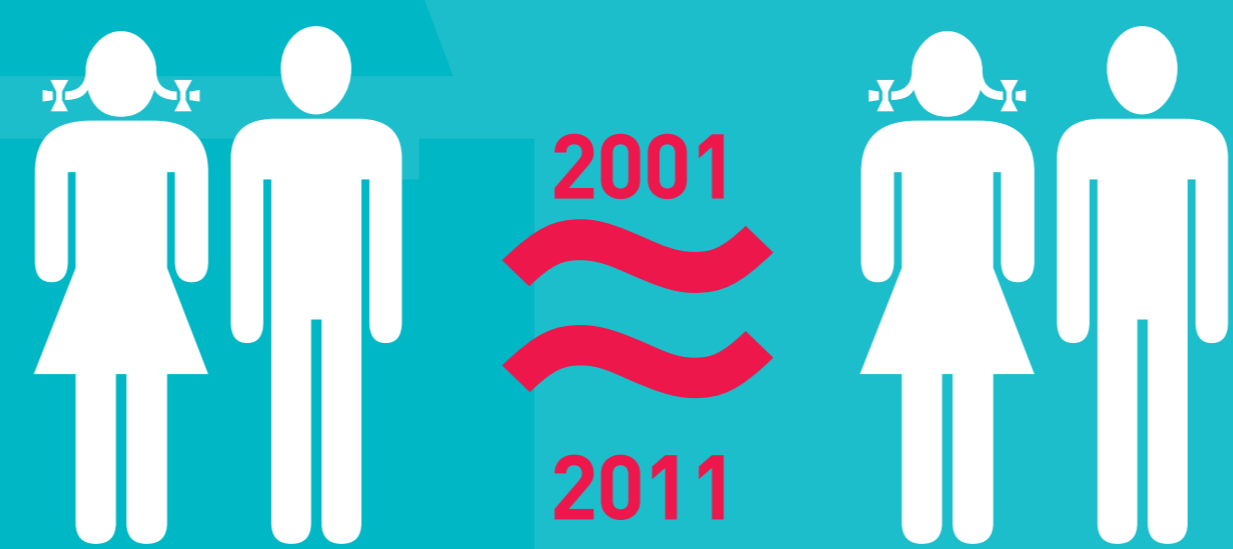
Northborough has had **no increase** in the number of households in the parish - remaining at **561** between 2001 and 2011



We have nearly as many residents **aged 16 and under** as we do residents **aged over 60**



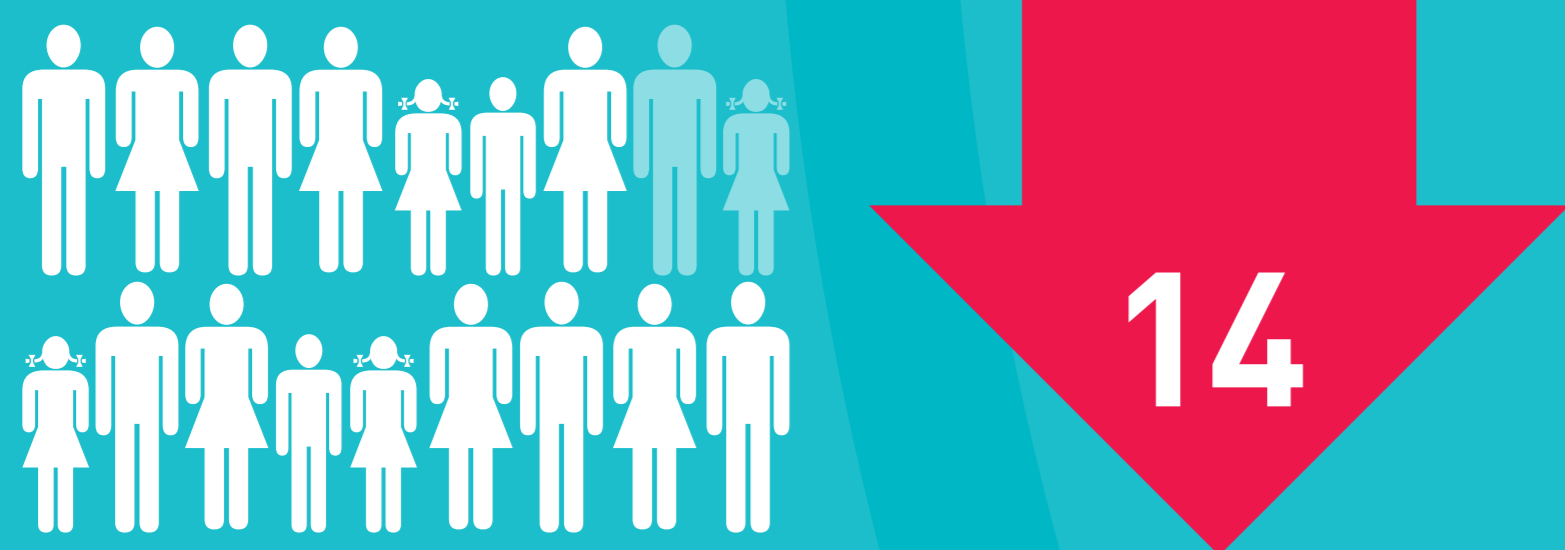
Northborough has a population of **1318 people** compared to Deeping Gate (**515 people**), Peakirk (**446 people**) and Glington (**1740 people**)



In 2011, **226** residents in our village were **16 years old and under**. This has remained largely the same since 2001 when it stood at **224**. **8.5%** of residents in our village are under 10 years old



**551** residents are aged **between 25 and 60** - that's nearly **half** of the village population



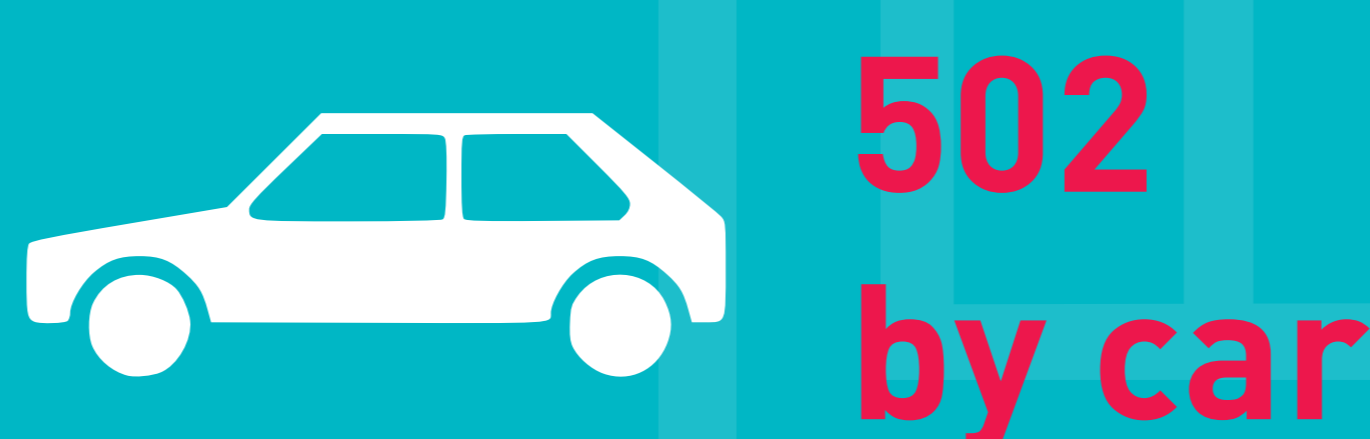
Our population has **decreased** marginally between 2001 and 2011, from **1332** to **1318** people



The percentage of the population **over 60 years old** has risen by **31%**, from **356** residents in 2001 rising to **468** in 2011



There has been a **decrease** in the numbers working from home from **85** residents in 2001 to **43** in 2011



Of all those in the village who commute to work, **28** use the bus. Most people - **502** residents (almost **77%**) drive to work or are a passenger in a car. **46** residents either cycle or go by foot



# NORTHBOROUGH 2025

Our village, our plan, our future

## Neighbourhood Planning in Context

The momentum behind Neighbourhood Plans is building. To date, the number of communities applying for neighbourhood area designation across England has surpassed 1000.



Upper Eden, Thame, Exeter St James, Tattenhall and District, Broughton Astley, Norland, Lynton and Lynmouth, Cringleford, Ascot Sunninghill & Sunningdale and Sprowston, Woodcote, Edith Weston and Arundel have all passed referendum

800

neighbourhood areas have been designated

75

draft plans have been published

42

plans have been submitted to examination

17

passed examination

13

plans have passed referendum

7

plans have already come into force

In Peterborough, we have five designated neighbourhood areas: **Bretton, Deeping Gate, Glington, Peakirk and Northborough**. So far, Northborough, Glington and Peakirk have started work in earnest on their Neighbourhood Plans.

Nationally, the Neighbourhood Plans that have successfully passed the referendum stage contain policies such as:



affordable housing



housing for older people



protecting green space



creation of a community hub



site allocation for housing and employment



views to the countryside



local facilities



parking



leisure/tourism



# NORTHBOROUGH 2025

Our village, our plan, our future

## Neighbourhood Planning

The Localism Act was passed in 2011, and introduced a new way of planning for future development called Neighbourhood Planning. The idea is that decision-making is passed from a national and regional level to local government, and from local government to local communities.

Under this new government legislation, for the first time Northborough Parish Council now has a chance of an influential say in our future as a village. Northborough's Neighbourhood Plan will be a community-led, statutory framework to guide future development and growth in the village.

## Northborough's Neighbourhood Plan

Our neighbourhood plan will be about the use and development of land in the Parish of Northborough and will contain a vision, aims and planning policies. It could also contain suggested improvements to village facilities and services with an allocation of key sites for specific kinds of development.

It could deal with a wide range of social, economic and environmental issues (such as housing, employment, heritage and transport, green spaces, renewable energy, cemetery provision).

## What's the process?





# NORTHBOROUGH 2025

Our village, our plan, our future

## How can I influence its outcomes?

**Get involved!** Give us your feedback now and throughout the process. There will be lots of opportunities for you to have your say, and we want to hear from you. You can contribute on one issue or the whole thing, whether that's in person, on paper, or online.

**We are always looking for more people to join the Northborough Neighbourhood Planning Team.**



At the moment there are a small number of us on the team, so we would welcome new members who want to be actively involved in creating Northborough's Neighbourhood Plan.

## Will it ever happen?

**Yes!** We're confident that it will. We have a tight programme to follow, but working with Northborough Parish Council and with the continued enthusiasm of all those involved in the village, we hope to have the plan adopted by Peterborough City Council by 2015.

**We hope you'll help us make this happen!**

## What difference will a Neighbourhood Plan make?

- Planning applications made in our parish will have to be assessed against the Northborough Neighbourhood Plan
- Peterborough City Council will have to consider the planning policies within our Neighbourhood Plan and turn down any application that doesn't meet the criteria, unless there are extraordinary reasons for allowing it
- Some villages have other documents such as Village Design Statements, Parish Plans, Community Plans. These are helpful in guiding decisions made by the Peterborough City Council, but none of them have statutory status as Northborough Neighbourhood Plan will
- Northborough is one of the first Parish Councils in Peterborough to use these powers
- We are also working with Peakirk, Glinton and possibly Deeping Gate to look at the important spaces between our villages

How can I give you feedback or share my ideas?

Fill out a postcard, and give it to a member of the Northborough Neighbourhood Planning Team, or drop it into the postbox in the **Pub, Village Shop, or Northborough Primary School**

Speak to one of the Northborough Neighbourhood Planning Team in person!

Email us on [NNP2025@gmail.co.uk](mailto:NNP2025@gmail.co.uk)